



Community Data Program Annual Meeting, 2020

*Programme de données
communautaires
Rencontre annuelle, 2020*

Virtual Meet-Up

Location: <https://cdp.adobeconnect.com/theboardroom>

Duration: 2 hours (1:30-3:30pm Eastern Standard Time)



**Canadian
CED Network**

Meeting Agenda

1. Welcome & Review of Agenda

2. Roundtable: Impact of COVID-19 on work and life

3. Highlights from 2019-2020 and Key Priorities for 2020-2021

4. Data Acquisition

5. Training & Capacity Building

6. Networking & Communication

7. COVID-19 Community Vulnerability Monitoring & Reporting tool

8. Discussion

9. Concluding Remarks



2. Roundtable: Impact of COVID-19 on members' work and life

Insert photos of Lead's working at home

3. Highlights from 2019-20/Key Priorities 2020-21

2019-2020 Highlights

- Transition to CCEDNet
- Maintain core mission: Data Acquisition, Training & Capacity Building, Networking
- Sustain Partnerships: LIPS Network, Prosper Canada (NFHI), CUSP (Energy Poverty)
- Develop resources for reaching modest capacity users
- Deliver a Member Survey

2020-2021 Priorities

- Strengthen the relationship with Statistics Canada
- Build strategic partnerships across sectors: Immigration, Economic Development and Public Health
- Fulfill 2020-2021 Schedule B
- Begin to prepare for census 2021
- Launch a data access service for modest capacity users
- Respond to COVID-19



3.1 Deepening the Relationship with Statistics Canada: Four areas of cooperation

1. Data Purchasing Efficiencies
 - Especially Custom Geos
2. Training & Capacity Building
3. COVID-19 Community Vulnerability Monitoring & Reporting Tool
4. Data Research & Development
 - including Modelling LFS/SHS/SFS/CCHS variables

Statistics Canada

Statistics Canada is the national statistical office. The agency ensures Canadians have the key information on Canada's economy, society and environment that they require to function effectively as citizens and decision makers.

Follow: [f](#) [ig](#) [in](#) [yt](#) [tw](#) [v](#) [rss](#)

[Sign up to My StatCan](#) to be notified of information on various topics.

In the news | *The Daily*

April 30, 2020

Payroll employment, earnings and hours, February 2020

The average weekly earnings of non-farm payroll employees were \$1,046 in February, little changed from January. On a year-over-year basis, earnings rose 3.7%, mostly the result of increases observed from May to October 2019.

[Continue reading...](#)

Item 3 of 4 [Pause](#)

COVID-19

COVID-19
A data perspective

COVID-19: A data perspective
Explore key economic trends and social challenges that arise as the COVID-19 situation evolves.

Canadian Statistical Geospatial Explorer Hub
Discover Statistics Canada's geo-enabled data, including indicators related to COVID-19, in this interactive map.

Canadian Economic Dashboard and COVID-19
View selected data relevant for monitoring the impacts of COVID-19 on economic activity in Canada.

Housing characteristics and staying at home during the COVID-19 pandemic

Key indicators | [★ All indicators](#)

Canada

Quarterly population estimate
(Note) (January 1, 2020)

37,894,799
0.3% ↑
(quarterly change)

Consumer Price Index
(March 2020)

0.9% ↑
(12-month change)

Unemployment rate
(March 2020)

7.8%
2.2 pts ↑
(monthly change)

Real GDP by expenditure
(Fourth quarter 2019)

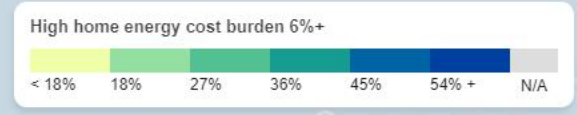
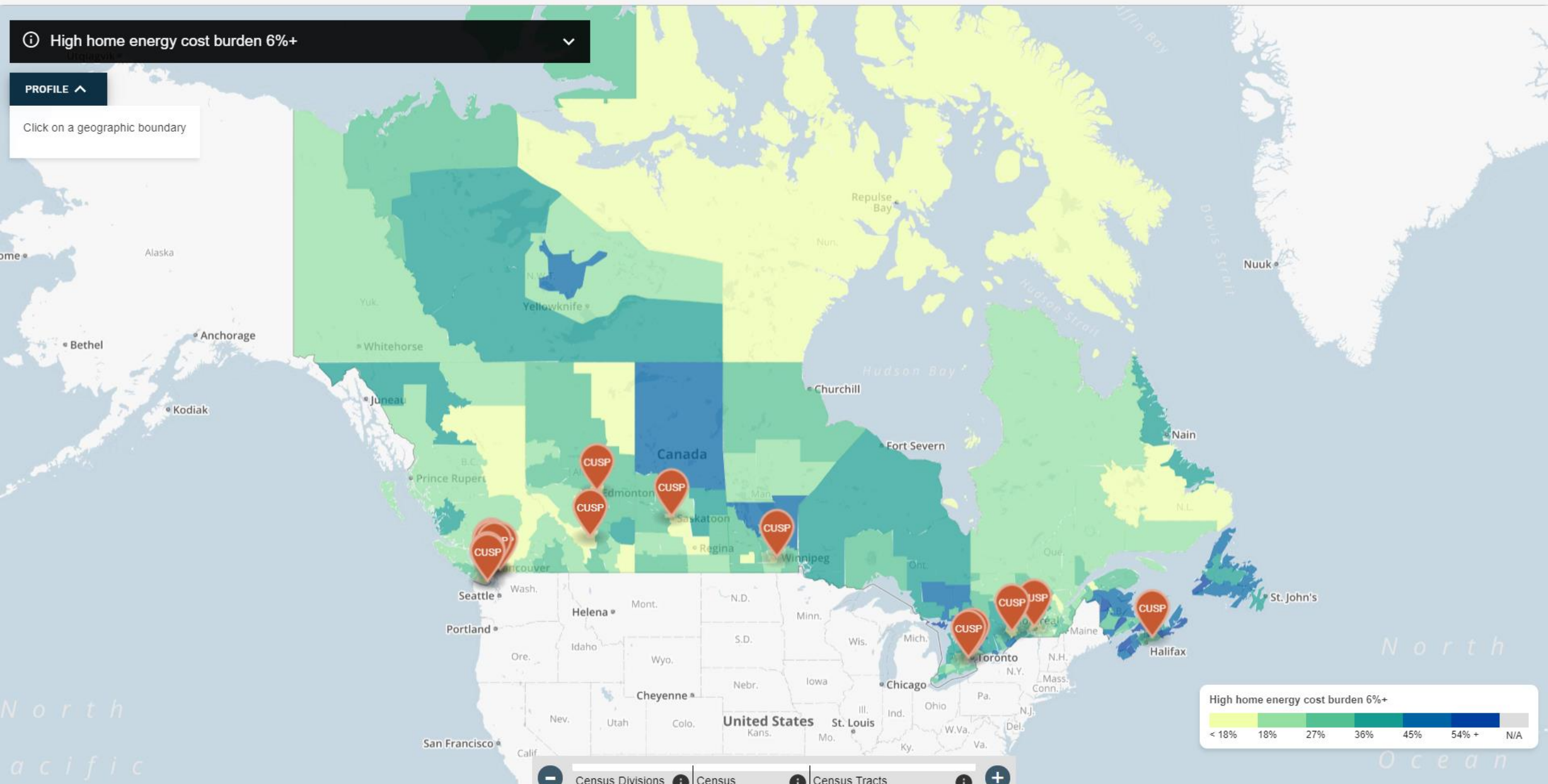
0.1% ↑
(quarterly change)



High home energy cost burden 6%+

PROFILE ^

Click on a geographic boundary



[-] Census Divisions ⓘ | Census Subdivisions ⓘ | Census Tracts ⓘ [+]



4. Data Acquisition and Access: Highlights from 2019-2020 and Plans for 2020-2021



4.1 DPAWG meetings in 2019-2020

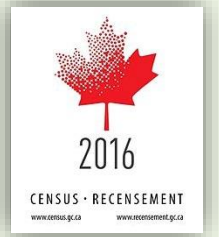
Data Purchase & Access Working Group Activities

“...helps...identify data needs, improve data access, acquire data, and address related technical concerns”

- **Five meetings** in 2019-2020 (one email update for cancelled meeting)
- Mostly data acquisition planning, still dominated by 2016 Census
- Troubleshooting, methodology questions, table specifications and format
- Meeting frequency decreased relative to 2018-2019

Thank you to all members of the DPAWG!





4.1 Highlights of 2019-2020 Data acquisition

- Postal Code Conversion File
- Canadian Business Counts (Jun/Dec)
- Building Permits
- TransUnion debt/bankruptcy scores
- Estimates of population by age and sex (intercensal population estimates)
- Labour Force Survey Estimates
- Canadian Survey on Disability



2016 Census

Standard geographies – 51 tables:

TGPs, custom tabulations, POW, semi-custom geos, CUSP home energy spending

Custom geographies – 27 tables:

TGPs, custom tabulations

2017 Taxfiler (T1FF) data – 64 tables:

Families, Individuals, Seniors, Financial Data, Charitable Donations, Migration

4.1 Top 10 data products in 2019-2020

| Data product | Downloads |
|--|-----------|
| Census Profile, 2016 | 311 |
| Target group profile of the population by age groups, Census, 2016 | 160 |
| Target group profile of the low-income population (LIM-AT), Census, 2016 | 159 |
| Target group profile of the population aged 65 and over, Census, 2016 | 139 |
| Target group profile of the recent immigrant population, Census, 2016 | 139 |
| Aboriginal household status (3), Age of the primary household maintainer (6), Core housing need status (3), Household type (7), Need criteria (12), Selected household statistics (5), and Tenure (3), 2016 Census | 132 |
| Target group profile of the immigrant population, Census, 2016 | 126 |
| Postal Code Conversion File, released Dec 2018 | 117 |
| Selected Language, Labour Force, Education, Income and Mobility Status Characteristics (73), Admission Category and Applicant Type (13), Period of Immigration (15) and Sex (3), 2016 Census | 115 |
| Target group profile of visible minority, Census, 2016 | 111 |
| Target group profile of Aboriginal Identity, Census, 2016 | 106 |



4.1 Top 10 data users in 2019-2020

| Name | Organization | Downloads |
|------------------------|-------------------|-----------|
| Andrea Dort | Peel Region | 370 |
| Ted Hildebrandt | Halton Region | 271 |
| Stefka Patchova | Ottawa and Region | 256 |
| Peter Marriott | Vancouver | 204 |
| Lorraine Copas | Vancouver | 133 |
| Prerna Bhasin | Toronto | 128 |
| Beth Wilson | Toronto | 121 |
| Greg Landry | Nova Scotia | 114 |
| D'Arcy Springate-Floch | Ottawa and Region | 107 |
| Margarita Pronina | York Region | 103 |



4.1 Top 10 downloaders by organization in 2019-2020

| Member Organization | Downloads |
|------------------------------------|-----------|
| Policywise for Children & Families | 1793 |
| Northern Policy Institute | 353 |
| City of Toronto | 345 |
| Community Development Halton | 320 |
| County of Simcoe | 253 |
| Region of Peel | 237 |
| City of Vancouver | 236 |
| Regional Municipality of Waterloo | 234 |
| Social Planning Toronto | 234 |
| City of Winnipeg | 192 |



4.2 Plans for 2020-2021 Data acquisition: 2016 Census

- **Custom tabulations at standard geographies**
 - 5 Household/Family-level Target Group Profiles
 - 5 Community Poverty Project tables
 - 3 custom tabulations, including working poor table
 - CUSP energy poverty table
- **Tables at custom geographies**
 - Household/Family-level Target Group Profiles
 - One immigration-related custom tabulation



4.2 2020-2021 Data acquisitions – Taxfiler data

High Priority

- Income of Families (17 tables)
- Income of Individuals (12 tables)
- Income of Seniors (5 tables)
- Financial Data and Charitable Donations (24 tables)
- Migration Estimates (5 tables)

- Custom – Working Poor
- Custom – Income Inequality
- Custom – Childcare cost tables
- Custom – Custom modifications of standard tables (F-6, F-19, F-20 and I-13)

Low Priority

- Standard tables at CSD geography (F-19, F-20, I-13, F-1, F-6, I-5 and S-5)
- Custom geography geocoding and tables



4.2 2020-2021 Data acquisitions

High Priority

- Postal Code Conversion File
- Canadian Business Counts (June and December releases)
- Building Permits
- Intercensal estimates of population by age and sex
- Welfare Incomes, 2019

Low Priority

- Labour Force Survey Estimates at Economic Region and CMA
- Consumer and mortgage debt data, bankruptcy and credit risk scores from TransUnion – 2020 Q1



4.2 2020-2021 Data acquisitions

- Employment Insurance statistics – CSD (CT?) level
- Labour Force Survey – CSD level
- Longitudinal Immigration Database (IMDB) tables
- Canadian Internet Use Survey
- Canadian Index of Multiple Deprivation
- Canadian Housing Survey
- Tableau Reader
- Data Modelling – Liquid Assets at CSD level



4.2 Outstanding issues and questions

- Limited production capacity at Statistics Canada
- Custom T1FF tabulations – reduce scope of order
- Data modelling – looking for partnership



5. Training & Capacity Building: Highlights from 2019-20 and Plans for 2020-21

The Goal: “Enable all CDP members to transform data products available from the CDP catalogue into evidence-based storytelling, reporting, planning and evaluation.”

5.1 Highlights from 2019-20 Webinars

- Treasure Hunt – Tips on searching the CDP Catalogue and finding data to solve problems (Program Orientations)
- Energy Poverty: What is energy poverty and how is it measured? (CDP Product Profile)
- Roundtable for Not-for-Profits (Transforming Data into Intelligence)



5.2 Plans for Webinars for 2020-2021

- Continue Webinars for 2020-2021
 - Orientations
 - Infographic on Immigration
 - Canadian Housing Survey
 - Poll on potential topics for webinars



5.3 Data access for high- and modest-capacity users

- Maintain the Community Data Catalogue
 - For High Capacity Users
- “Data on Demand” responsive service for modest capacity users
 - Build an Excel-compatible data warehouse of the most popular products
 - Deliver “Data on Demand” in Excel or Tableau Workbook formats
- Develop a Tableau Infographics library
- Launch a Program Analytics Page
 - Membership status by Consortium
 - Data usage by consortium and organisation
- Deliver training for users to access Tableau infographics



6. Networking and Communication

Highlights from 2019-20 and Plans for 2020-21

6.1 The CDP Newsletter



Community Data Program

Enabling communities across Canada to measure and track local well-being

MAKING *it* COUNT

News from the CCEDNet Community Data Program Team

Volume 8, Issue 2 - February 2020

Table of Contents

- [The 2020 User Survey](#)
- [The Community Data Program's transition to CCEDNet](#)
- [Webinars](#)
- [Data news](#)

[View this email in your browser](#)

6.2 The Member (User) Survey

FEATURED CDP RESOURCES

Webinars



"How-to" Video: Finding Data in the Catalogue

Find Data
Search our Canadian datasets by applying the filters below

Topics: Choose some options | Product Group: Choose some options | Data Provider: Choose some options

Product Title: | Geographies: Choose some options | Years within data: | Items per page: 20

Apply Filters | Reset Filters

Displaying 1 - 20 of 1020 Products, sorted by post date

| Title | Geographies |
|--|---|
| Home energy spending as % after tax household income (H), Household home energy expenditures (3), Selected Household Statistics (H), Low Income Status (LRA-AT) (2), Household with after-tax income groups (H), Housing Tenure (H), Census 2016 | Province and Territory, Census Subdivision, Census Tract, Census Metropolitan Area, Census Division, Census Agglomeration |

PRODUCT GROUP: Census, 2016 - Data tables

Member Use of Community Data



Summary

As Statistics Canada releases data from the 2016 Census, the York Region working Census group continues to collaborate to interpret and analyze it, offering a York Region perspective.

On November 16, York Regional Council received a report and presentation on two infographic style bulletins which provide a York Region perspective on the Census population data and household demographic data.

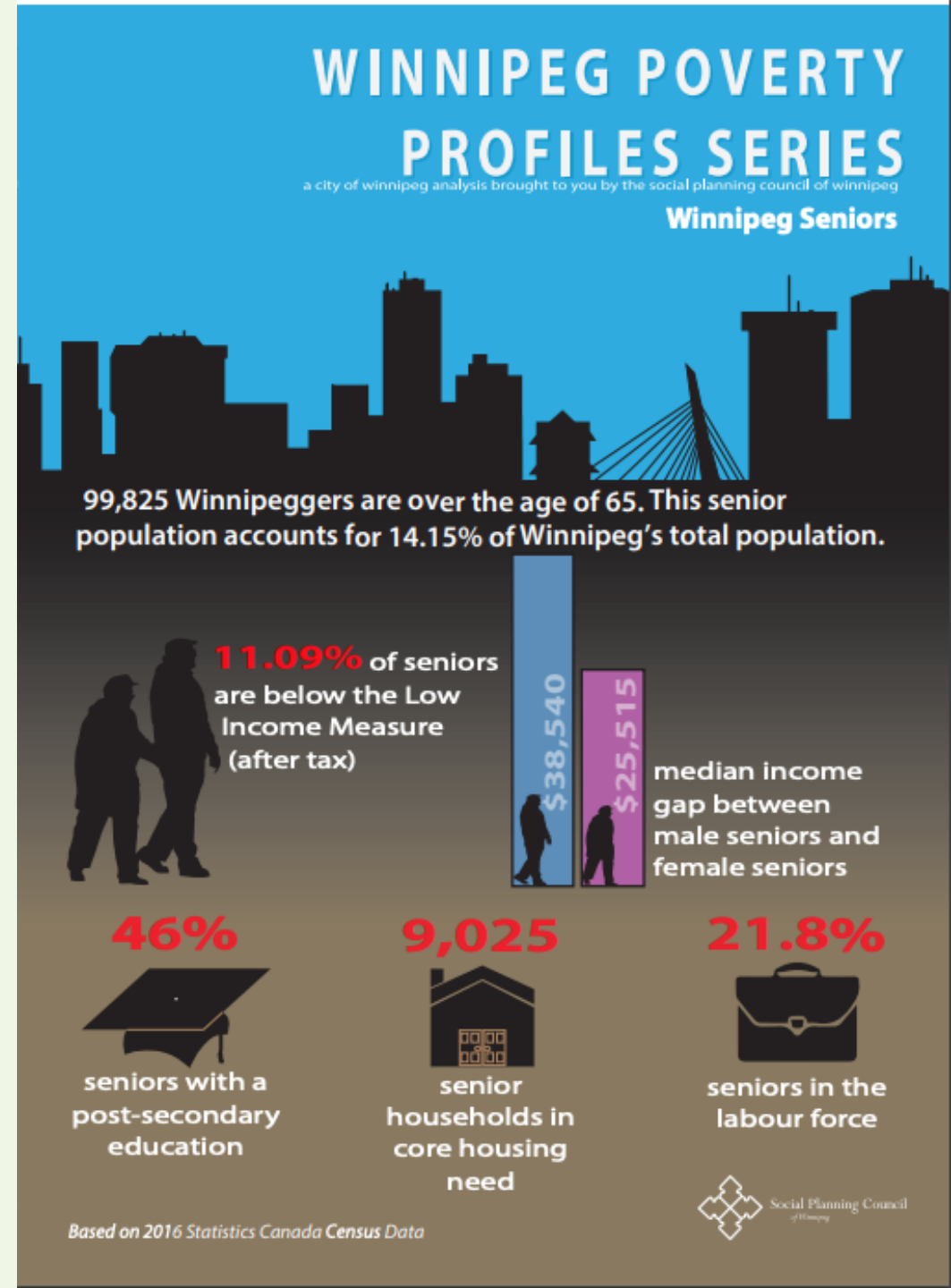
Additional bulletins highlighting trends income, housing, immigration and agriculture trends in York Region and its nine local cities and towns can be found on the [York Region Census page](#).



6.3 Community Snapshots

Albert Boakye, Social Planning Council of Winnipeg

Winnipeg Poverty Profile 2019



7. Proposal to Monitor & Report on COVID-19 Community Vulnerability

Overall:

- Use CDP data to tell stories
- Rely on Tableau as a powerful analytical and visualisation tool
- A contribution to COVID-19 recovery

Goal:

- Serve as an awareness-raising and communications tool
- Create a framework for local monitoring & reporting
- Market the CDP by highlighting data sets



COVID19 Community Vulnerability Profile: Before, During, and Recovery

| Data Product | Story/Variables |
|--|--|
| Canadian Business Counts | Changing profile of local business |
| Labour Force Survey | Unemployment rates |
| Employment Insurance | EI claims by class of worker and type of benefit |
| Canadian Community Health Survey | Snapshot of underlying health conditions |
| Industry Canada Insolvency Data | # of business & consumer bankruptcies |
| TransUnion Credit Rating | Snapshot of Consumer debt |
| Census Demographic Data | |
| Neighbourhood Financial Health Index | Requires modelling Household Savings data |
| Statistics Canada Canadian Internet Use Survey | Home Internet access Canadians reporting Telework |
| Canadian Housing Survey | A range of housing-related indicators |



8. Further Discussion

9. Concluding remarks

Michael Toye

Community Data Program Annual Meeting, 2020

Rencontre annuelle du Programme de données communautaires, 2020



**Canadian
CED Network**

